

## RIO-FLECT STAIN RESISTANCE TEST RESULTS

Substrate - Newly Poured & Non-Polished Troweled Slab

Surface Treatment: RIO-FLECT Densifier & RIO-FLECT Integrated Stain Guard

Temperature: 78°F @ 50% RH



Acrylic Concrete Stain



No Stain Penetration

**Stain Agent:** 100% Acrylic Dark Grey Concrete Stain

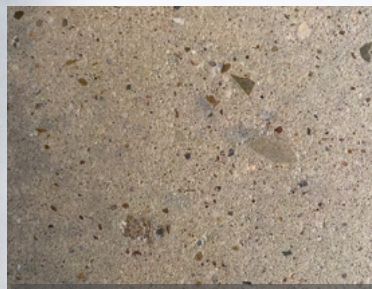
**Dwell Time:** 20 Minutes

**Cleaning Method:** Water Dampened Cloth

**Result:** Zero Stain Penetration



Yellow Mustard



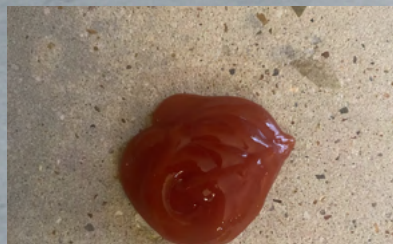
No Stain Penetration

**Stain Agent:** Yellow Mustard

**Dwell Time:** 20 Minutes

**Cleaning Method:** Water Dampened Cloth

**Result:** Zero Stain Penetration



Ketchup



No Stain Penetration

**Stain Agent:** Ketchup

**Dwell Time:** 20 Minutes

**Cleaning Method:** Water Dampened Cloth

**Result:** Zero Stain Penetration



Vegetable Oil



No Stain Penetration

**Stain Agent:** Vegetable Oil

**Dwell Time:** 20 Minutes

**Cleaning Method:** Water Dampened Cloth

**Result:** Zero Stain Penetration