



2022



# INDUSTRIAL GRADE POLYMER FLOOR SYSTEMS CATALOG

- SYSTEMS INCLUDE:**
- EPOXY and EPOXY MORTAR
  - MOISTURE MITIGATION
  - ESD and CONDUCTIVE
  - NOVOLAC EPOXY
  - DECORATIVE EPOXY
  - URETHANE CEMENT
  - MMA
  - POLYASPARTICS
  - HIGH WEAR URETHANES
  - DECK COATINGS
  - POLISHED CONCRETE
  - STANDARD PIGMENTS



HANGAR FLOOR NEEDS

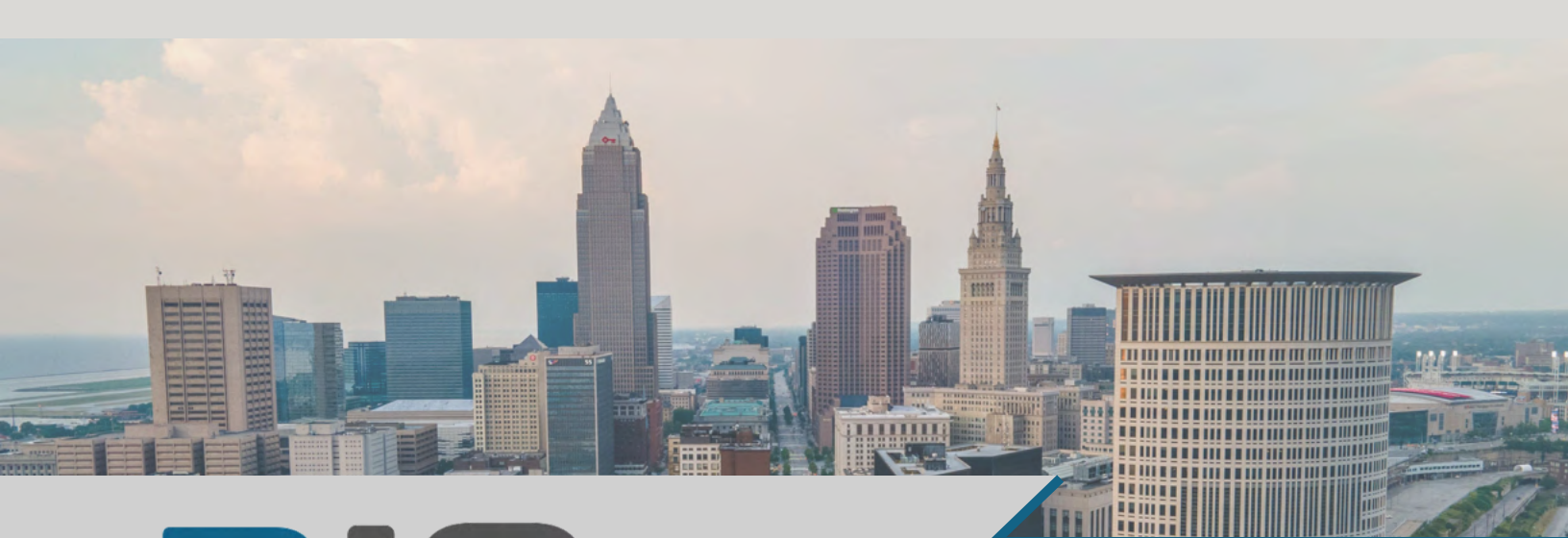
- SKYDROL RESISTANT
- JET FUEL RESISTANT
- SATIN WHITE FINISH

#theRIOdifference

RIO FLOORING SYSTEMS INC.  
 2926 CHESTER AVE CLEVELAND, OHIO 44114  
 888-278-2183  
 INFO@RIOFLOOR.COM



www.riofloor.com



# ABOUT US



Emergency stop pull cable

RIO FLOORING SYSTEMS LLC was founded as a contractor focused polymer flooring manufacturer based in Cleveland, Ohio. Our installer focused strategy ensures your floor will be professionally installed every time providing years of superior performance.

Height limit switch

Cage lid

For over 100 years, our American factories have been designing and manufacturing a wide range of polymer flooring products from Epoxy to MMA.

Thank you for taking time to review our products. Should you have any questions please call us at 888-278-2183 or email us directly at [info@riofloor.com](mailto:info@riofloor.com)



# TABLE OF CONTENTS

SECTION 09670



**PAGE: 1-3** EPOXY SYSTEMS

**PAGE: 4** MOISTURE MITIGATION

**PAGE: 5-6** EPOXY MORTARS

**PAGE 7:** DECORATIVE EPOXY

**PAGE 8:** NOVOLAC EPOXY

**PAGE 9:** ESD & CONDUCTIVE EPOXY

**PAGE 10-11** URETHANE CEMENT

**PAGE 12-13** MMA

**PAGE 14-15** URETHANE TOPCOATS

**PAGE 16:** POLYASPARTICS

**PAGE 17-18** DECK COATINGS

**PAGE 19-20** CONCRETE POLISHING

**PAGE: 21** WARRANTY

B. RIO-COAT EMP: A neutral, two-component, high solids epoxy.

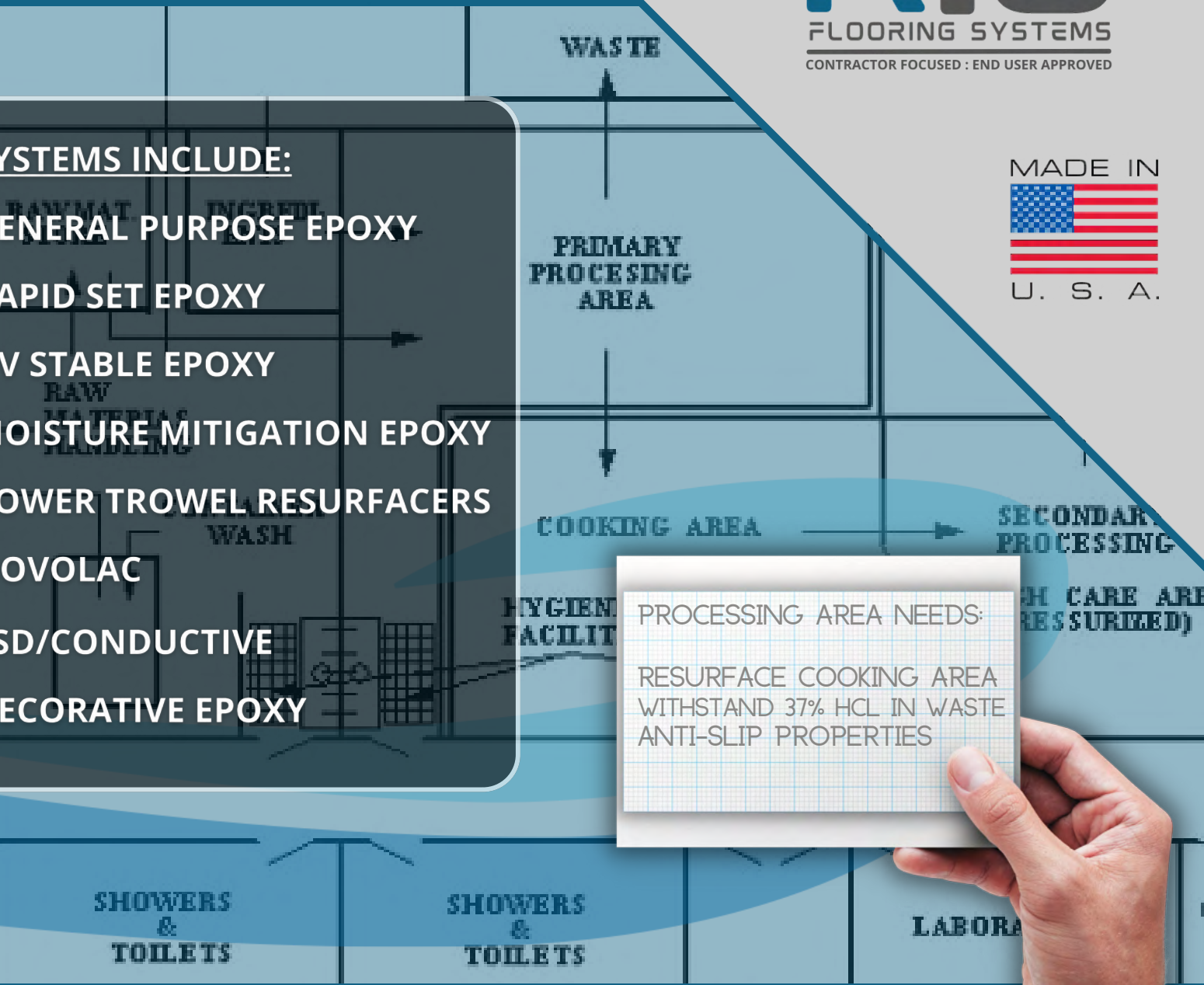


# RIO-COAT™ EPOXY SYSTEMS



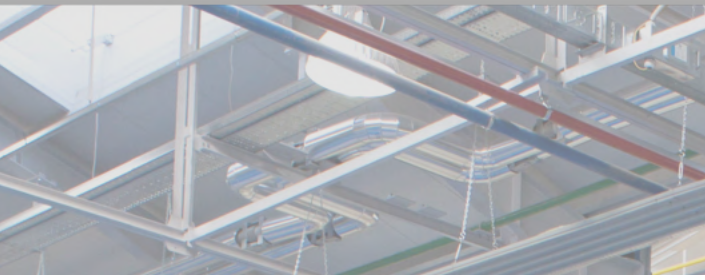
## SYSTEMS INCLUDE:

- GENERAL PURPOSE EPOXY
- RAPID SET EPOXY
- UV STABLE EPOXY
- MOISTURE MITIGATION EPOXY
- POWER TROWEL RESURFACERS
- NOVOLAC
- ESD/CONDUCTIVE
- DECORATIVE EPOXY



PROCESSING AREA NEEDS:  
 RESURFACE COOKING AREA  
 WITHSTAND 37% HCL IN WASTE  
 ANTI-SLIP PROPERTIES





## RIO-COAT™ EMP GENERAL PURPOSE EPOXY



MANUFACTURING FACILITY

### RIO-COAT™ EMP SPECIFICATION:

RIO-COAT™ EMP is a high solids industrial grade coating that can be used on multiple surfaces. This resilient high-gloss surface is easy to clean and provides excellent protection against wear and abrasions.

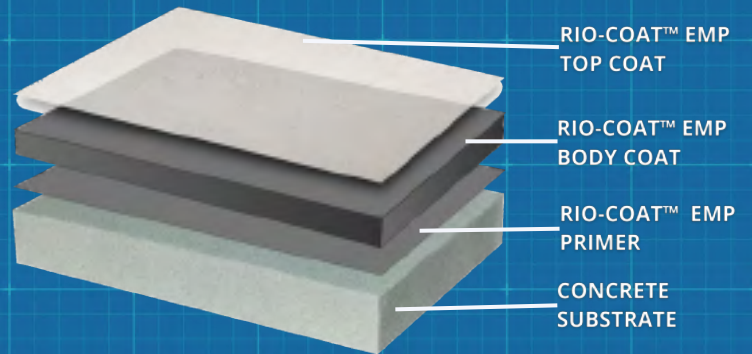
- Industrial grade resins
- Primer, build and epoxy topcoat system
- Low maintenance & hygienic
- Faster cure
- Smooth and high-gloss finish
- Can be applied clear or pigmented

### Recommended for:

- Base resin for all decorative systems
- Aviation hangars
- Industrial and commercial use
- Hospitality and entertainment venues
- Veterinary & kennel
- Municipal and government facilities
- Stadiums and arenas



Technical Documents



### Packaging and Coverage

2:1 Ratio

Available in 3, 15 and 150 Gallon Kits

*Can be applied at thicknesses ranging from 6 - 20 mils depending on the requirements of the job*





**RIO-COAT™ ERS  
RAPID SET EPOXY**

**RIO-COAT™ ERS SPECIFICATION:**

RIO-COAT ERS™ is a fast cure high solids epoxy coating that can be used on multiple surfaces.

- Dry to touch in 3-4 Hours @ 70°F
- Excellent chemical resistance
- Can be applied clear or pigmented
- 2:1 ratio
- Available in 3 & 15 gallon kits

*Can be applied at thicknesses ranging from 6 - 20 mils depending on the requirements of the job*



**CHEMICAL PROCESSING ROOM**



**RIO-COAT™ EUV  
UV RESISTANT EPOXY**

**RIO-COAT™ EUV SPECIFICATION:**

RIO-COAT EUV is recommended for warehouses, kitchens, restrooms, and other areas where either a high-build clear product is needed or where a decorative filled is desired and better UV resistance is needed

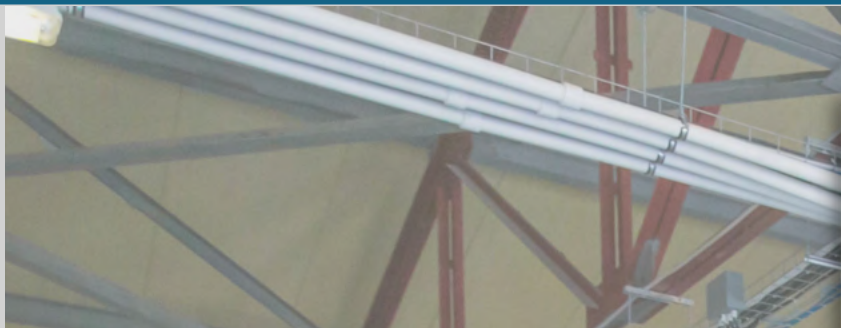
- Excellent UV protection
- 2:1 Ratio
- Available in 3 & 15 gallon kits

*Can be applied at thicknesses ranging from 5 - 20 mils depending on the requirements of the job*



**HIGH TRAFFIC WAREHOUSE**





## RIO-COAT™ EVS MOISTURE MITIGATION EPOXY



BREWERY ADDITION

### RIO-COAT™ EVS SPECIFICATION:

RIO-COAT™ EVS is a two-part 100% solid epoxy moisture mitigation system. EVS is a moisture tolerant and VOC-Compliant product that limits alkalinity and the transmission of moisture, odor and other elements through concrete slabs.

- 100% Solids
- 85% & 99% rH options
- 0.06 perm rating
- VOC compliant
- Clear only -do not pigment

Packaging and Coverage

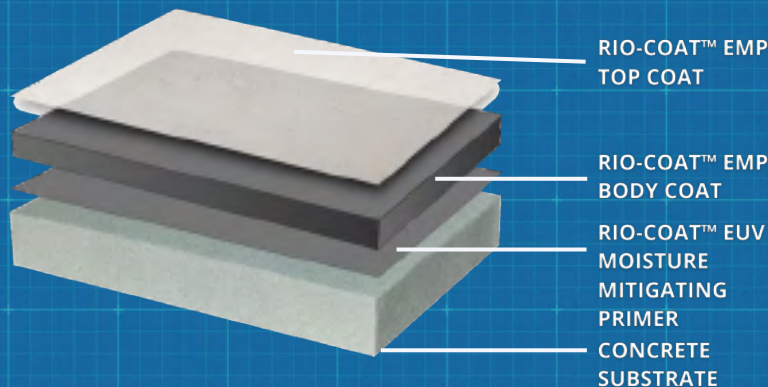
1:1 Ratio

Available in 2, 10, 100 & 500 Gallon Kits

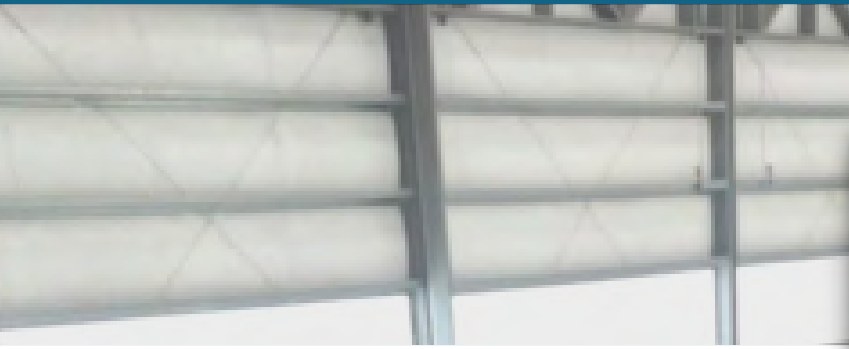
*Covers 107ft<sup>2</sup> at 15mils for 85%rh or 70ft<sup>2</sup> at 23mils for 99%rh*



Technical Documents







**RIO-COAT™ ETM/EHB/EPT  
POWER TROWEL RESURFACERS**



RESURFACED AIRCRAFT HANGAR

**RIO-COAT™ ETM SPECIFICATION:**

RIO-COAT™ ETM is a three-component filled, high-solids epoxy system for resurfacing eroded interior concrete floors. Topcoats (RIO-COAT™ EMP, RIO-COAT EHB AND RIO-COAT EPT) are two-component, high-solids epoxies for sealing the overlay.

Applications include repairing large eroded areas such as main traffic aisles, loading docks, aircraft hangars and other spaces subject to heavy traffic and abuse.

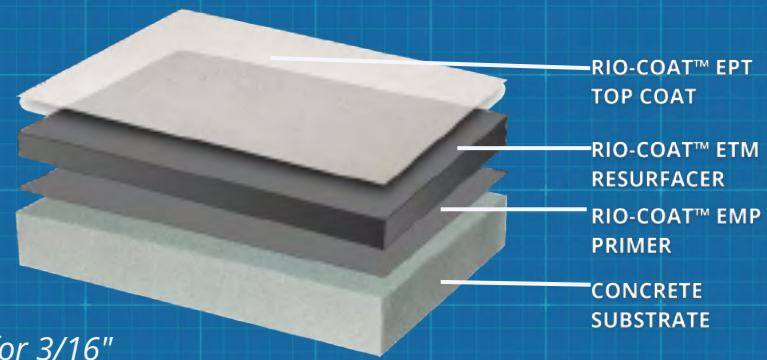
- Safe to use around solvent sensitive products such as food, beverages and pharmaceutical
- Less costly than concrete replacement or capping
- Low VOC (6 g/L). (Complies with SCAQMD VOC regulations. LEED credits available.)

Packaging and Coverage  
2:1 Ratio  
Available in 15 and 150 Gallon Kits

*Covers 42ft<sup>2</sup> at 40 mils for 1/4" and 45ft<sup>2</sup> at 36mils for 3/16"*



**Technical Documents**







**RIO-COAT™ EHB EPOXY GROUT COATING**

**RIO-COAT™ EHB SPECIFICATION:**

RIOCOAT™ EHB is a high solids epoxy coating that can be used for sealing a highly filled epoxy sand filled re-surfacer. This high-gloss surface is easy to clean and provides excellent protection against wear and abrasions.

- Excellent chemical and impact resistant
- Stipple finish coating for slight non-skid
- Topcoat for sand filled re-surfacer

Packaging and Coverage

2:1 Ratio

Available in 3 and 15 Gallon Kits

*Covers 133ft<sup>2</sup> per gallon at 12mils*



**HOSPITAL RENOVATION**

APPLICATIONS:  
Seal Coat for Epoxy Mortar



**RIO-COAT™ EPT POWER TROWEL TOP COAT**

**RIO-COAT™ EPT SPECIFICATION:**

RIO-COAT™ EPT Topcoat is a high solids, thickened epoxy for sealing an overlay or if an "orange-peel" texture is desired.

- LEED® v4 – Indoor air quality credits available.
- Meets requirements per CDPH-CA Section 01350
- Environmentally and user friendly
- Complies with SCAQMD VOC regulations--<100 g/L

Packaging and Coverage

2:1 Ratio

Available in 3 and 15 Gallon Kits

*Covers 133ft<sup>2</sup> per gallon at 12mils*



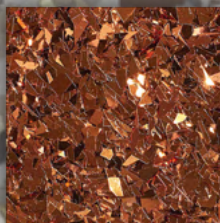
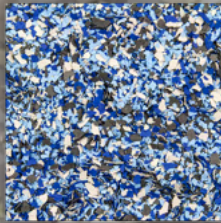
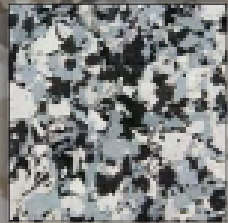
**EMERGENCY ROOM FLOOR**

APPLICATIONS:  
Walls - Seal Coat for Epoxy Mortar - Base Coat to Create Texture

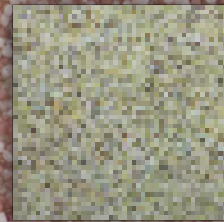
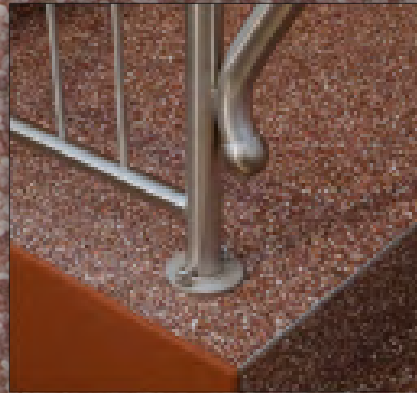


**RIO-COAT™ DECORATIVE EPOXY  
 OPTIONS**

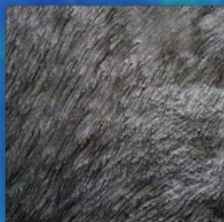
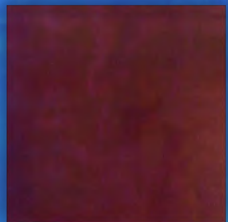
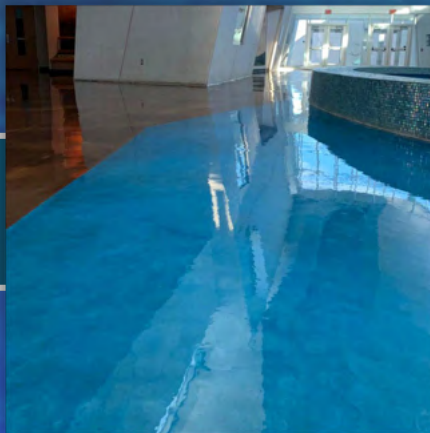
**RIO-COAT™  
 DECORATIVE FLAKE**



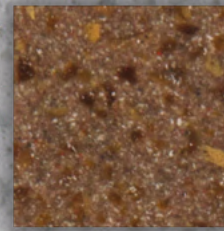
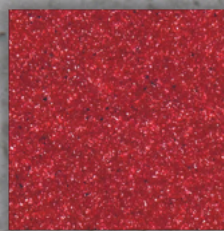
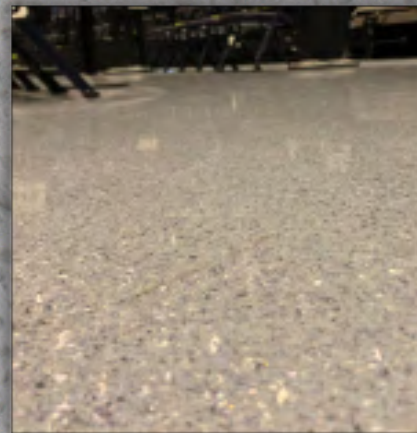
**RIO-COAT™  
 DECORATIVE QUARTZ**



**RIO-COAT™  
 DECORATIVE METALLIC**



**RIO-RAZZO™  
 DECORATIVE SLURRY**







**RIO-COAT™  
NOVOLAC EPOXY**

BATTERY CHARGING STATION

**RIO-COAT™ ECR NOVOLAC SPECIFICATION:**

RIO-COAT™ ECR Novolac is a two-component colored high solids Novolac epoxy coating designed for application where splash and spills of acids, chemicals, and solvents occur.

Applications include battery charging stations, chemical storage rooms, second containment areas and waste treatment plants.

- High-build and top coat options
- Excellent chemical resistance
- Excellent solvent resistance
- Superior resistance to high concentration acids and alkalis

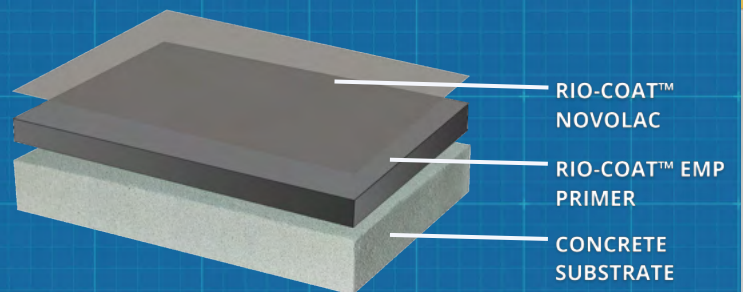
Packaging and Coverage  
2:1 Ratio

Available in 3 and 15 Gallon Kits

*Covers 90-100 square feet per gallon @ 16-18 mils*



Technical Documents





**RIO-STAT™  
ESD & CONDUCTIVE**



**RIO-STAT™ SPECIFICATION:**

Provides excellent abrasion resistance, chemical resistance and static dissipative properties. The electroconductive ingredients used will not wear off and retain their conductive properties regardless of temperature, and unlike Ionics, the performance is independent of humidity.

- Dissipates a 5000 volt charge to zero in less than 0.1 Seconds
- Tests Less than  $1 \times 10^9$  Ohms conforming with ANSI/ESD S20.20 standard when applied Over RIO-COAT™ EMP non-conductive primer or basecoat
- Tests less than  $1 \times 10^6$  Ohms conforming with ANSI/ESD S20.20 standard when applied over conductive primer
- Body Voltage Generation (BVG) Below 15 volts with conductive footwear, conforming With ANSI/ESD S20.20 standard
- Meets USGBC LEED criteria for low VOC, low odor

Packaging and Coverage

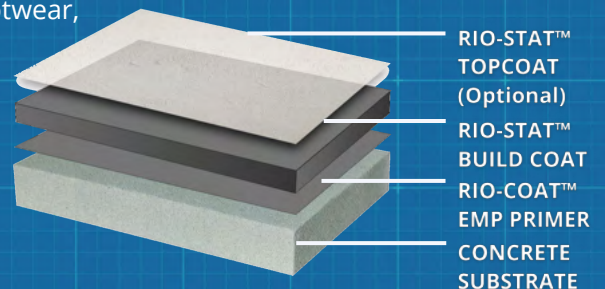
2:1 Ratio

Available in 3 and 15 Gallon Kits

*When applied over prepared concrete the material typically goes down at approximately 20-32 mils when spread at 50-80 ft<sup>2</sup> per gallon*



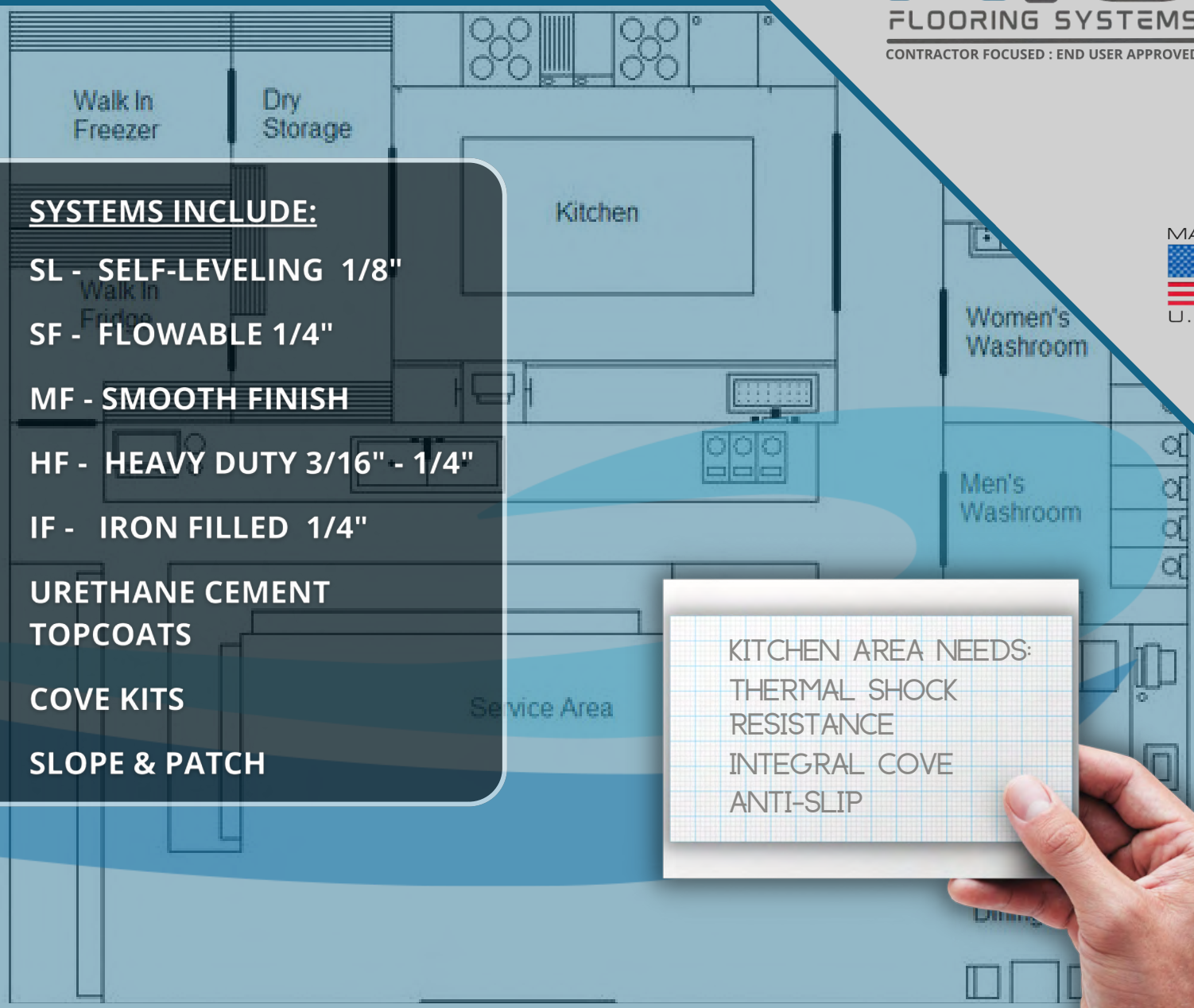
**Technical Documents**







# RIO-CRETE™ URETHANE CEMENT SYSTEMS



## SYSTEMS INCLUDE:

SL - SELF-LEVELING 1/8"

SF - FLOWABLE 1/4"

MF - SMOOTH FINISH

HF - HEAVY DUTY 3/16" - 1/4"

IF - IRON FILLED 1/4"

URETHANE CEMENT  
TOPCOATS

COVE KITS

SLOPE & PATCH

KITCHEN AREA NEEDS:  
THERMAL SHOCK  
RESISTANCE  
INTEGRAL COVE  
ANTI-SLIP



## HIGH-PERFORMANCE CHEMISTRY

- Exceptional Stain Resistance
- Withstands Thermal Shock
- Excellent Abrasion Resistance
- Bio-Based Formula

## RECOMMENDED APPLICATIONS:

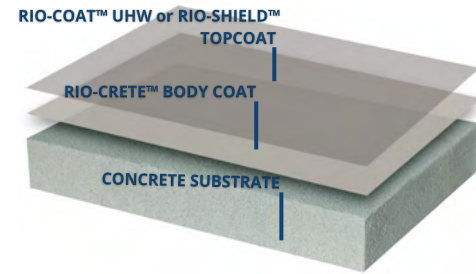
- Commercial Kitchens
- Supermarkets
- Food and Beverage Facilities
- Laboratories
- Breweries & Distilleries

## SAFETY BENEFITS

- Slip-Resistant Textures
- Low V.O.C.
- USDA, FDA, EPA, OSHA and ADA Compliant
- Contributes to LEED® Credits

## EASY MAINTENANCE

- Easy and Economical to Clean
- No Stripping, Waxing or Polishing Needed
- Pressure Sprayable, Power Washable



## STANDARD RIO-CRETE™ SYSTEM

NOTE: To increase service life, we recommend applying RIO-COAT™UHW or RIO-SHIELD™ MMA topcoat on all RIO-CRETE™ Urethane Cement Systems

# TECHNICAL DATA

SCAN TO DOWNLOAD TDS & SDS



PROPERTIES	RIO-CRETE™ SL	RIO-CRETE™ SF	RIO-CRETE™ MF	RIO-CRETE™ HF	RECOMMENDED TOP COAT OPTIONS	
					RIO-COAT™ UHW	RIO-SHIELD™ MMA
APPLICATION	Medium Duty	Heavy Duty	Medium to HD	Heavy Duty	High Traffic	Fast Installation
COMPRESSIVE STRENGTH (ASTMC-579)	8,400 psi	8,200 psi	7,200 psi	7,800 psi	Moisture Cured Urethane	Cures in 1 Hour
TENSILE STRENGTH (ASTM C-307)	1050 psi	975 psi	1050 psi	975 psi	High Gloss or Satin Finish	UV Resistant
FLEXURAL STRENGTH (ASTM C-5800)	2,700 psi	2,500 psi	2,700 psi	1,900 psi	Non-Slip Options	VOC Compliant
BOND STRENGTH (ASTMD-4541)	100% Concrete Failure	100% Concrete Failure	100% Concrete Failure	100% Concrete Failure	Pigmented or Clear	Excellent Scratch and Chemical Resistance
IMPACT STRENGTH in/lbs (ASTM) D-4226	>160 in-lb	>160 in-lb	>160 in-lb	>160 in-lb	Non-Yellowing	Non-Slip Options
VOC	5gm/l	5gm/l	5gm/l	5gm/l	UV Stable	
RESISTANCE TO FUNGI GROWTH (ASTM G-21)	Pass, Rating of 1	Pass, Rating of 1	Pass, Rating of 1	Pass, Rating of 1	Excellent Stain Resistance	

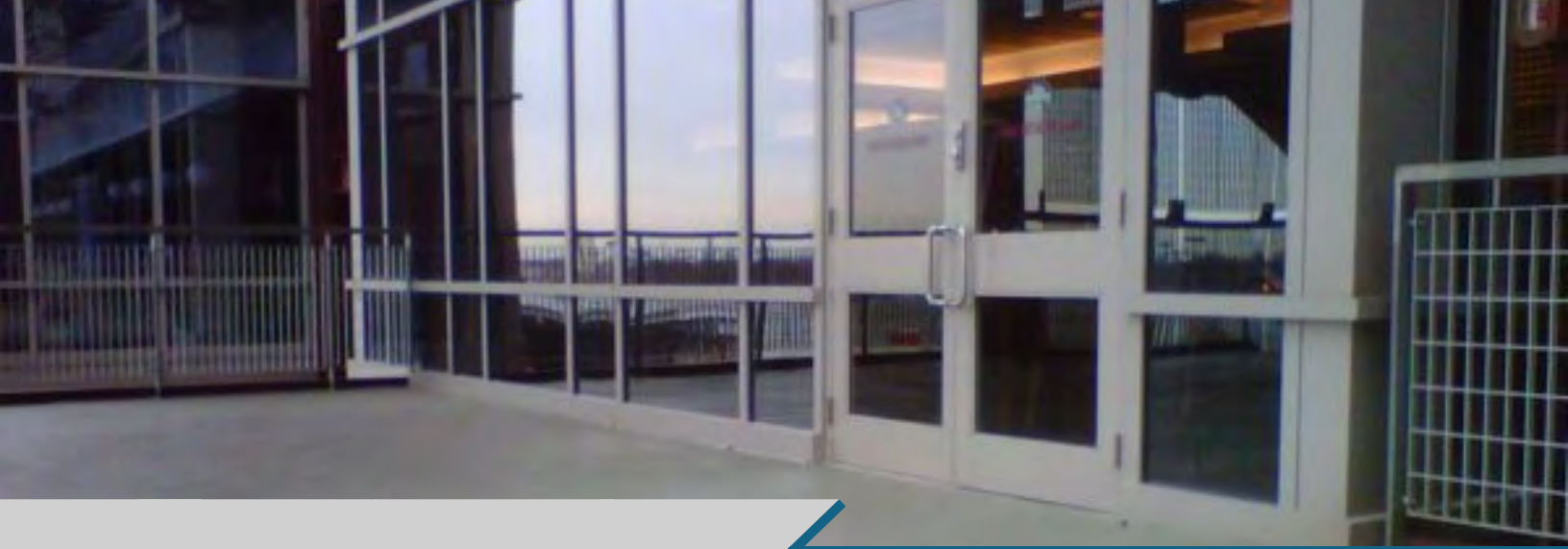
The data shown above reflects typical results based on laboratory testing under controlled conditions. Variations from the data shown may result. Test methods are modified where applicable.

PACKAGING & COVERAGE	PART NUMBER	PART NUMBER	PART NUMBER	PART NUMBER	PART NUMBER	PART NUMBER
10 GALLON KIT INCLUDES: 5gal Part (A), 5gal Part (B), 10 Bags Part (C)	R-CSL-10 Cove Kits Available	R-CSF-10 Cove Kits Available	R-CMF-10 Cove Kits Available	R-CHF-10 Iron-Filled & Cove Kits Available	R-UHW-1H 1.45 gal kit	R-MMT-5 5 gal kit
THICKNESS (Finished Floor)	3/16"	1/4"	3/16" Smooth	1/4" - 3/8"	R-UHW-6H 5.75 gal kit	R-MMT-50 50 gal kit
COVERAGE	32ft² per gallon	23ft² per gallon	23ft² per gallon	23ft² per gallon	500ft² per gallon	80ft² per gallon

## COLOR SELECTION







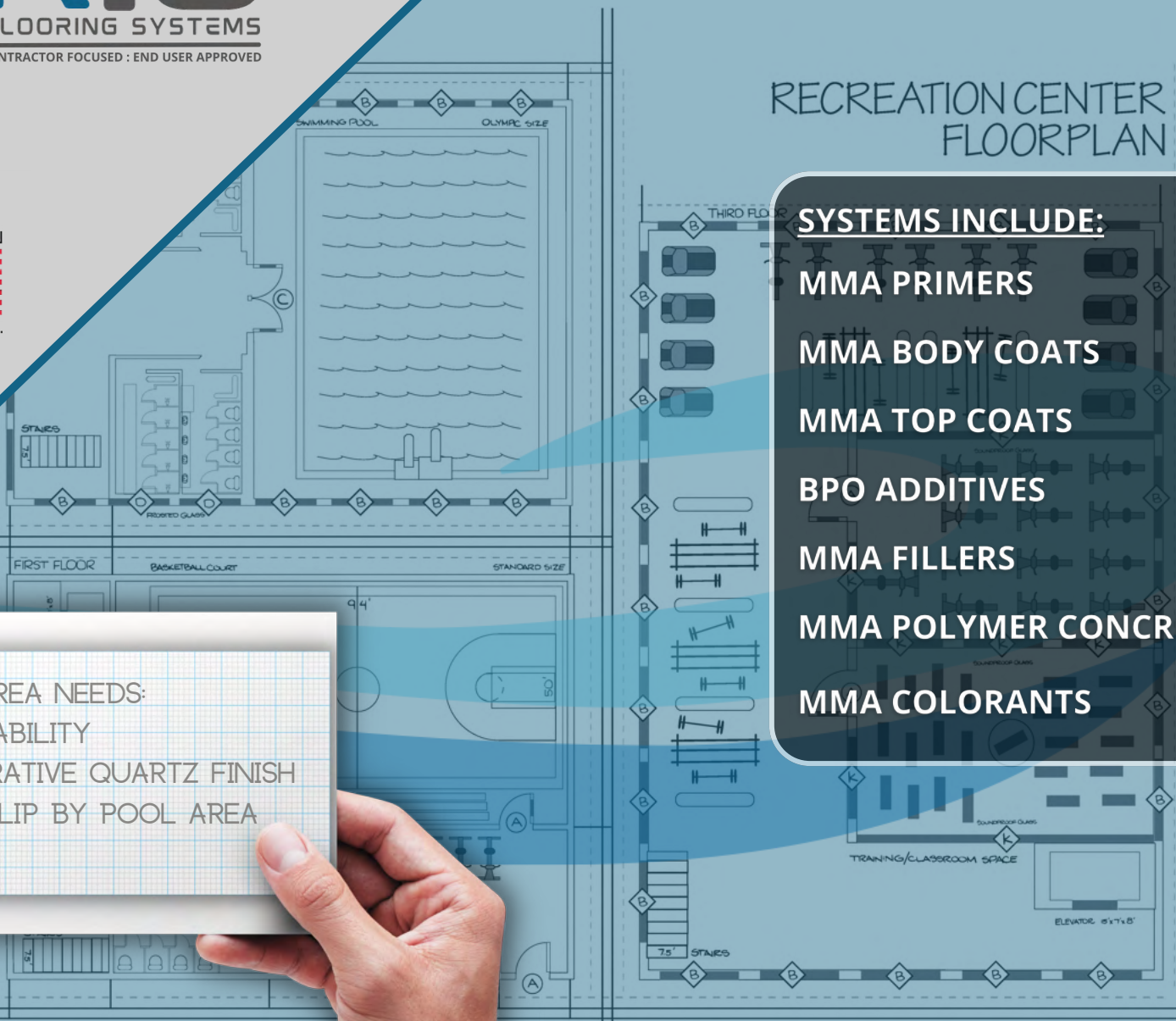
# RIO-SHIELD™ MMA FLOORING SYSTEMS



## RECREATION CENTER FLOORPLAN

- SYSTEMS INCLUDE:**
- MMA PRIMERS
  - MMA BODY COATS
  - MMA TOP COATS
  - BPO ADDITIVES
  - MMA FILLERS
  - MMA POLYMER CONCRETE
  - MMA COLORANTS

REC AREA NEEDS:  
 UV STABILITY  
 DECORATIVE QUARTZ FINISH  
 ANTI-SLIP BY POOL AREA





## RIO-SHIELD™ MMA FLOORING SYSTEMS

### RIO-SHIELD™ MMA SPECIFICATION:

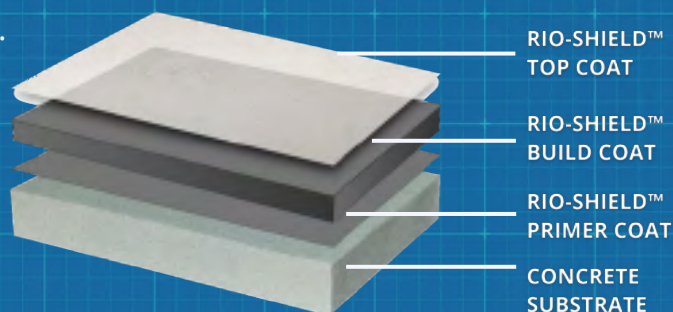
RIO-SHIELD™ MMA Flooring Systems are designed to cure within 1 hour. Our unique formula was designed to prevent liquids and most pollutants from penetrating the coating, leaving a smooth, durable, easily cleanable surface. There are no grout lines or seams where bacterial growth can occur.

- Excellent bonding capabilities — achieves a chemical bond to other RIO system components
- UV resistant for indoor or outdoor application.
- Cures fast — under an hour. Cures at a wide range of temperatures. (even below freezing)
- 100% reactive — VOC compliant.
- Excellent chemical, mechanical, thermal resistance.
- Excellent scratch resistance

Packaging and Coverage  
Available in 5 and 50 Gallon Kits  
*Covers 80ft<sup>2</sup> per Gallon at 20mils*



Technical Documents







# RIO-COAT™ URETHANES AND POLYASPARTICS



**SYSTEMS INCLUDE:**  
**HIGH-WEAR URETHANE TOP COATS**  
**URETHANE WEAR GUARD**  
**POLYASPARTIC 85**



HANGAR FLOOR NEEDS  
SKYDROL RESISTANT  
JET FUEL RESISTANT  
SATIN WHITE FINISH



## RIO-COAT™ UHW URETHANE TOPCOAT



### RIO-COAT™ UHW SPECIFICATION:

RIO-COAT UHW is a high-solids moisture cured urethane coating. UHW can be applied clear or pigmented with no filler leaving a high gloss smooth finish. Glass beads can be added to provide non-slip, better abrasion resistance with high gloss, or aluminum oxide can be added to provide the highest abrasion resistance.

- Excellent wetting properties, stain and chemical resistance
- Great choice for all applications where urethane topcoats are being installed
- Extremely low VOC (*50 State Compliant*)
- Minimal to no odor
- User friendly application process
- Non-yellowing, UV stable 100% aliphatic urethane

Packaging and Coverage

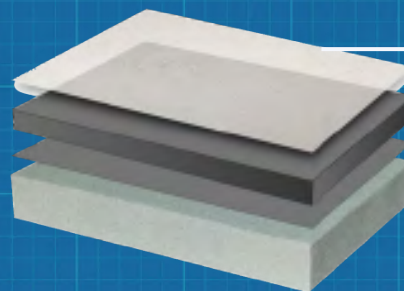
4:1 Ratio

Available in 1.5 and 6 Gallon Kits

Covers 500ft<sup>2</sup> at 3mils per Gallon



**Technical Documents**



RIO-COAT™ UHW TOPCOAT

*We recommend using RIO-COAT™ UHW on all Epoxy and Urethane Cement Systems. UHW extends service life and increases durability.*



## RIO-COAT™ POLYASPARTIC 85

### RIO-COAT™ POLYASPARTIC 85 SPECIFICATION:

RIO-COAT™ UPA 85 is a unique, economical, low-viscosity, fast-drying polyaspartic/polyurea that stays clear and will not blush or haze at high film thicknesses (15 mils). Frequently used as topcoats in abusive environments such as garages, warehouses and production areas. RIO-COAT UPA 85 may also be used as a clear primer.

- Excellent UV stability
- Extremely fast cure time
- Excellent chemical and tire-stain resistance
- Great leveling properties
- Field tintable with RIO-COLOR™ pigment packs

Packaging and Coverage

1:1 Ratio

Available in 1 Gallon & 5 Gallon Kits

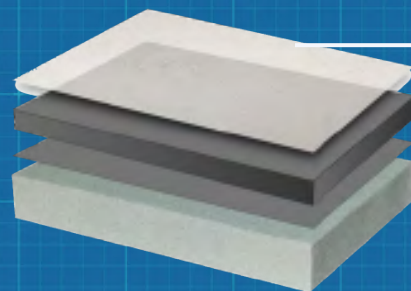
Coverage: 80-800 SF per working gallon. Coverage rates may vary due to porosity, density, texture and application methods.



**Technical Documents**

RIO-COAT™ POLYASPARTIC

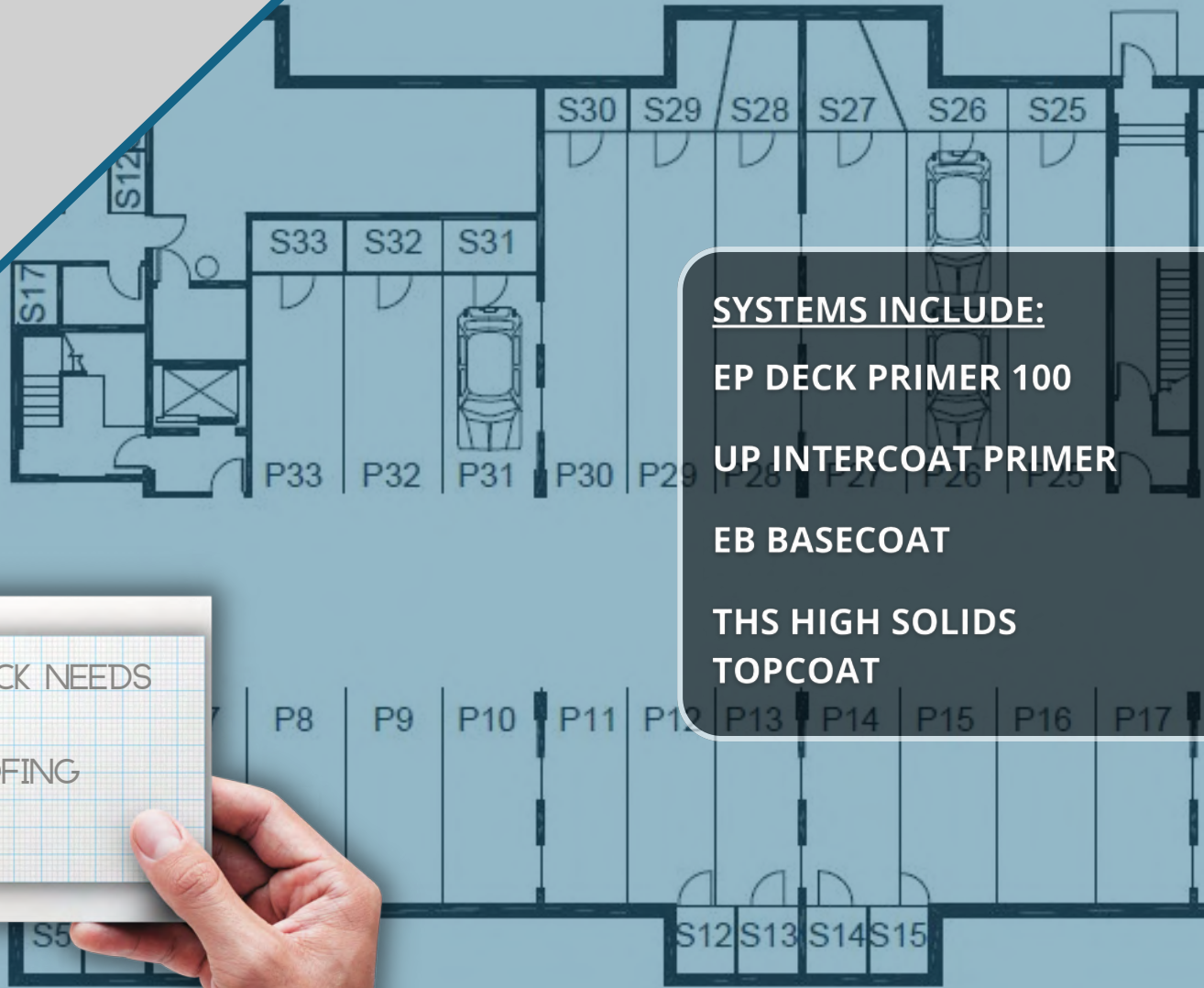
We recommend using RIO-COAT™ POLYASPARTIC 85 in high traffic areas such as fire stations, garages and shops.







# RIO-DECK™ PARKING DECK SYSTEMS



- SYSTEMS INCLUDE:**
- EP DECK PRIMER 100
  - UP INTERCOAT PRIMER
  - EB BASECOAT
  - THS HIGH SOLIDS TOPCOAT

PARKING DECK NEEDS  
 UV STABLE  
 WATERPROOFING  
 TAN COLOR



**RIO-DECK™ PARKING  
DECK SYSTEM**

**RIO-DECK™ SPECIFICATION:**

RIO-DECK™ Parking Deck System was designed to provide exceptional durability and longevity for indoor and outdoor parking areas and decks.

**RIO-DECK™ DECK PRIMER** is a two-component, liquid applied, solvenated epoxy-polyamine primer with unique penetrating characteristics. This primer is recommended for metal flashings and other medium to heavy duty traffic areas and for outdoor applications.

**RIO DECK™ EB BASECOAT** is a solvent free, single component, liquid applied, water catalyzed, polyurethane elastomeric waterproofing base membrane.

**RIO DECK™ UP URETHANE PRIMER** is a single component, liquid applied, aromatic, urethane-polyurea primer for outdoor and light-duty traffic areas

**RIO-DECK™ THS** is a high solids long lasting UV stable topcoat designed for heavy vehicle traffic



Technical Documents

***RIO-DECK™ IS SOLD IN VARIOUS KIT SIZES AND COLORS. PLEASE CONTACT YOUR RIO SALESPERSON FOR MORE DETAILS OR EMAIL US AT [info@riofloor.com](mailto:info@riofloor.com)***

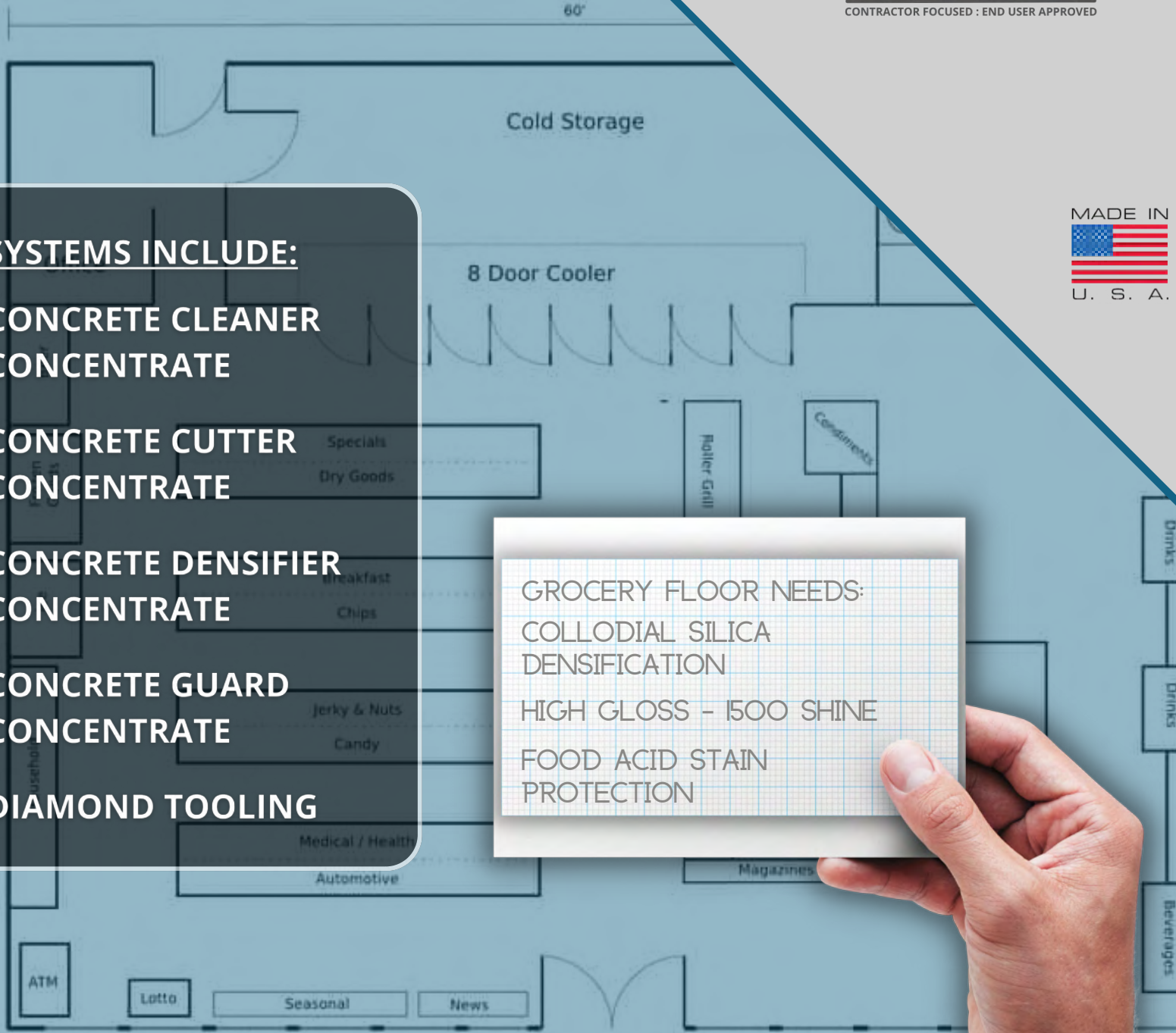




# RIO-FLECT™ CONCRETE POLISHING SYSTEM



- SYSTEMS INCLUDE:**
- CONCRETE CLEANER CONCENTRATE**
- CONCRETE CUTTER CONCENTRATE**
- CONCRETE DENSIFIER CONCENTRATE**
- CONCRETE GUARD CONCENTRATE**
- DIAMOND TOOLING**



GROCERY FLOOR NEEDS:  
 COLLOIDAL SILICA DENSIFICATION  
 HIGH GLOSS - 1500 SHINE  
 FOOD ACID STAIN PROTECTION







**RIO-FLECT™ CONCRETE  
POLISHING SYSTEMS**

**RIO-FLECT™ SPECIFICATION:**

RIO-FLECT™ Concrete Polishing System is a concentrated, low pH nanoparticle colloidal silica system. Our unique chemistry allows material to hold stability even if it happens to freeze. Can not be over-applied and safe for auto-scrubber application.

**RIO-CLEAN™ CONCRETE SLAB CLEANER CONCENTRATE 480:1**

*Removes oils, abrasives and surface contaminants which can stain and damage concrete floors. Regular maintenance with RIO-CLEAN™ will increase slab durability and reflectivity while reducing porosity.*

**RIO-CUTTR™ CONCRETE SLAB CUTTER CONCENTRATE 3:1**

*Softens concrete slabs with a concentrated proprietary formula that penetrates deep with low pH nanoparticles to help increase stock removal and improve diamond tool life.*

**RIO-DENSE™ CONCRETE SLAB DENSIFIER CONCENTRATE 3:1**

*Fortifies concrete slabs with a concentrated proprietary nanoparticle formula that penetrates to increase surface density and hardness.*

**RIO-GUARD™ CONCRETE SLAB GUARD CONCENTRATE 4:1**

*Proprietary water-based polymer stain guard which bonds to any concrete slab or cementitious topping. RIO-GUARD™ protects slabs from oils, food based acids and other contaminants that can damage concrete.*



**Technical  
Documents**



**STANDARD PIGMENT**



Regal Blue\*



Smoke Blue



Ivy Green\*



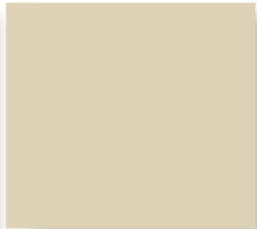
Rotunda Red



Tile Red\*



Yellow



Sandy Beige



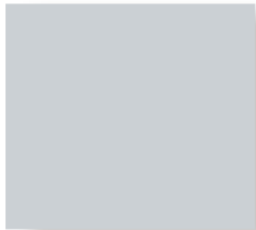
Battleship Gray\*



Medium Gray\*



Canada Gray



Light Gray



Night Gray



Black\*



White

*\*Can be used in RIOCRETE Systems.*





**MUST register project online for warranty: <https://www.riofloor.com/warranty/>**

#### **LIMITED WARRANTY**

RIO FLOORING SYSTEMS offers a full one-year warranty against defects in material only, as produced by RIO FLOORING SYSTEMS. Warranties concerning installation and floor life are to be provided by approved contractors or installers for specified periods. This warranty does not apply if products of other manufacturers are used in conjunction with RIO. Full specifications for all phases of installation are provided with all RIO materials. All such specifications, statements, technical information and recommendations contained therein are based on tests we believe to be reliable. The accuracy or completeness thereof is not guaranteed, and the following disclaimers are a part of the warranty.

#### **DISCLAIMER:**

Rio Flooring Systems shall not be responsible for structural failure or workmanship that is not in accordance with standard industry practices and procedures and Rio Flooring System published instructions. Rio Flooring Systems will not be liable for any loss or damage arising from the Rio Flooring System surface preparation system or any Rio Flooring System product incorporated therein, whether direct, indirect, special, incidental or consequential, regardless of the legal theory asserted, including warranty, contract, negligence or strict product liability. Some states do not allow the exclusion of consequential damages, so these limitations or exclusions may not apply to you. For all Rio Flooring System products in commercial installations, this warranty is expressly in lieu of all implied warranties, including the IMPLIED WARRANTY OF MERCHANTABILITY. Some states do not allow the exclusion of implied warranties, so this exclusion may not apply to you. Cracking due to structural movement beyond the engineered design, excessive deflection or other failure of the substrate, improper installation of any accessory products including (but not limited to): adhesives, crack and expansion joint filler, patches and other underlayments, sealers and/or damage to structural or subfloor elements from water are also not covered. Acts of God including but not limited to flooding, hurricane, tornado, earthquake and fire shall not be covered under this warranty. Rio Flooring System will not be responsible for system failure resulting from the use of non- Rio Flooring System products or non-specified products. The potential for efflorescence and shading is inherent in all cementitious products and is not considered a manufacturing defect. Although Rio Flooring System may have suggested the material or developed the material at the request of the owner or applicator, it is the responsibility of the owner to test and determine the suitability of the material for the intended use and purpose, and the owner assumes all risk and liability whatsoever regarding such suitability. This warranty is not a maintenance contract. Any warranties implied by law shall be limited in duration to the duration of this limited warranty. Some states do not allow limitations on how long an implied warranty lasts, so the above limitation may not apply to you. Any claim alleging a breach of this warranty or any other warranty must be brought within one year of the breach.

#### **DISCLAIMER:**

EXCEPT FOR THE WARRANTIES AND REPRESENTATIONS EXPRESSLY SET FORTH IN THIS LIMITED WARRANTY, PLATFORM/RIO FLOORING SYSTEMS DISCLAIMS ANY AND ALL OTHER WARRANTIES EXPRESSED, IMPLIED OR STATUTORY, REGARDING OR RELATING TO THE L3 AND P360 PRIMER LEVELING SYSTEM. PLATFORM/ RIO FLOORING SYSTEMS SPECIFICALLY DISCLAIMS ALL IMPLIED WARRANTIES OF MERCHANTABILITY AND FITNESS FOR A PARTICULAR PURPOSE WITH RESPECT TO THE L3 LEVELING SYSTEM. THIS LIMITED WARRANTY SETS FOR ALL OF THE RESPONSIBILITIES OF PLATFORM/ RIO FLOORING SYSTEMS REGARDING THE L3 LEVELING SYSTEM. REPAIR OR REPLACEMENT OF THE AFFECTED AREA OF THE PLATFORM/ RIO FLOORING SYSTEMS L3 SYSTEM IS THE EXCLUSIVE REMEDY. THE INSTALLER AND THE OWNER AGREE THAT NO OTHER REMEDY (INCLUDING, BUT NOT LIMITED TO, INCIDENTAL OR CONSEQUENTIAL DAMAGES FOR LOST PROFITS, LOST SALES, OR ANY OTHER INCIDENTAL OR CONSEQUENTIAL LOSS) SHALL BE AVAILABLE TO THE INSTALLER AND THE OWNER.

RIO FLOORING SYSTEMS INC.  
2926 CHESTER AVE  
CLEVELAND, OHIO 44114  
888-278-2183  
info@riofloor.com  
www.riofloor.com





## RIO FLOOR CARE AND MAINTENANCE GUIDE

**RIO FLOORING SYSTEMS** provide safe, durable floors that are simple and inexpensive to maintain. A program of routine sweeping, light scrubbing and occasional spot cleaning will help your floor retain its attractive appearance and superior performance for years to come. Rio floors never need waxing. **SCHEDULE** The frequency and scheduling of flooring maintenance must be determined by each facility in accordance with their operation and activities.

**CHOICE OF CLEANING SOLUTION:** The type and level of soil and/or contamination determines the type of cleaning chemical(s) needed. When evaluating the cleaning regime required for a given facility, test the efficacy of the mildest chemical cleaner before moving on to harsher products. A dilute solution of water and a pH Neutral (pH 7.0) or slightly alkaline non residual detergent is a good starting point. After using any cleaning product, rinse the floor thoroughly with fresh, clean water. Immediately wet vacuum or squeegee to drain, depending upon equipment and local regulations.

**SWEEPING:** Sweep floors once or more times daily with a broom or soft-bristled mechanized sweeper, depending upon room size. Because dust and soil can act as abrasives under the weight of traffic, regular sweeping can help extend the life of the finish and result in longer periods between recoats.

**WASHING AND SCRUBBING:** Wash the floor with an appropriate cleaning solution using a mop and bucket, soft bristled deck brush or soft bristle mechanized scrubber. In very soiled areas, allow the cleaner to penetrate floor for up to five minutes or in accordance with product instructions before rinsing. Highly contaminated areas may require several passes. It is imperative to rinse the floor well with clean water and wet vacuum or squeegee the rinse water to a drain, depending upon equipment and local regulations. This helps to ensure that all residue is completely removed from the floor. Allow floor to air dry. A minimum of once-weekly scrubbing is recommended. Facilities with high levels of traffic or contamination require more frequent scrubbing. Note: A build-up of soap residue can create a slip/fall hazard. Proper rinsing is strongly recommended.

**HIGH PRESSURE WASHERS:** High pressure washing equipment with water temperatures of maximum 149° F (65° C) may be used on RIO FLOORING SYSTEMS floors. For temperatures higher than 149° F (65° C), check with your RIO FLOORING SYSTEMS Representative. **SPILLS** Any liquid or particulate spill can pose a slip hazard and should be attended to immediately. Depending upon concentration and length of exposure, harsh materials, such as caustics, acids, and solvents, can potentially damage your floor coating. Spills of this kind should be cleaned up immediately. **Spill Clean-Up:** 1. Use circular motion to wipe up spill. Try to avoid spreading. 2. Scrub the area with a dilute solution of water and a mild surfactant-type detergent cleaner. 3. Rinse well with fresh water until thoroughly clean. Then, vacuum or squeegee to remove all rinse water. 4. Dispose of chemical waste in accordance with governing regulations.

**SCRATCHES AND GOUGES:** Depending upon your floor's finish, avoid sliding or scraping heavy machinery, pallets or sharp objects along the surface, as this may result in cuts or gouges. **STAINS** Should staining occur, attempt removal first with a mild solution, progressing to stronger cleaners until stain disappears. Wear appropriate hand and eye protection when working with chemicals. If a dry residue is evident, a flat plastic tool may prove useful in first removing any dried foreign material, so long as care is taken to avoid scratching the surface. Then apply the appropriate mild cleaning solution, allowing it to penetrate the floor for up to five minutes or in accordance with product directions. Proceed to remove the stain and all remaining residue. If the stain persists, contact your RIO FLOORING SYSTEMS Representative for assistance.



**PLASTICIZER MARKS:** Plasticizer marks, sometimes referred to as “shadows” or “tire stains”, are permanent marks left in floor coatings. These marks are caused by chemicals called plasticizers that are used in the manufacturing of rubber wheels. After the wheels are in contact with the floor for a period of time, the plasticizers can seep into the floor coating, leaving dark spots on the surface. While these marks cannot be removed, they can be hidden by sanding and recoating the floor using a RIO FLOORING SYSTEMS colored flooring system. However, the best way to approach the problem of plasticizer marks is to prevent them from appearing in the first place. This can be done by placing a barrier between the tires and the floor.

**STATIC CONTROL FLOORS:** Clean RIO FLOORING SYSTEMS Electrostatic Dissipative (ESD) and Conductive (CON) Flooring Systems using the techniques described above. Avoid floor wax, polish or other residuals, as they may be insulative and potentially interfere with static control properties. Note: A build-up of soap residue can have an insulative effect on static control floors. Proper rinsing is strongly recommended.

**SCAN ME**



[www.riofloor.com](http://www.riofloor.com)

RIO FLOORING SYSTEMS INC.  
2926 CHESTER AVE  
CLEVELAND, OHIO 44114  
888-278-2183  
[info@riofloor.com](mailto:info@riofloor.com)  
[www.riofloor.com](http://www.riofloor.com)





URETHANES EPOXIES MMA

**RIO FLOORING SYSTEMS INC.**

**Order Now:**

888-278-2183 (Direct)

440-605-1020 (Headquarters)

[order@riofloor.com](mailto:order@riofloor.com)



#the**RIO**difference