



RIO-COAT™ EPOXY SYSTEMS



FLOORING SYSTEMS

CONTRACTOR FOCUSED : END USER APPROVED

MADE IN



U. S. A.

SYSTEMS INCLUDE:

GENERAL PURPOSE EPOXY

RAPID SET EPOXY

UV STABLE EPOXY

MOISTURE MITIGATION EPOXY

POWER TROWEL RESURFACERS

NOVOLAC

ESD/CONDUCTIVE

DECORATIVE EPOXY

WASTE

PRIMARY PROCESSING AREA

COOKING AREA

SECONDARY PROCESSING

HYGIENE FACILITY

LABOR CARE AREA (RESURFACED)

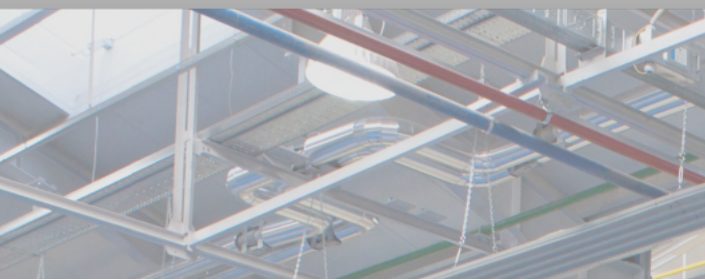
SHOWERS & TOILETS

SHOWERS & TOILETS

LABOR

PROCESSING AREA NEEDS:

RESURFACE COOKING AREA WITHSTAND 37% HCL IN WASTE ANTI-SLIP PROPERTIES



RIO-COAT™ EMP GENERAL PURPOSE EPOXY



MANUFACTURING FACILITY

RIO-COAT™ EMP SPECIFICATION:

RIO-COAT™ EMP is a high solids industrial grade coating that can be used on multiple surfaces. This resilient high-gloss surface is easy to clean and provides excellent protection against wear and abrasions.

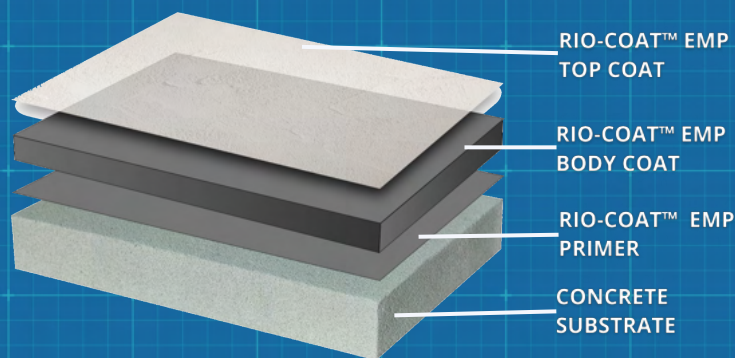
- Industrial grade resins
- Primer, build and epoxy topcoat system
- Low maintenance & hygienic
- Faster cure
- Smooth and high-gloss finish
- Can be applied clear or pigmented

Recommended for:

- Base resin for all decorative systems
- Aviation hangars
- Industrial and commercial use
- Hospitality and entertainment venues
- Veterinary & kennel
- Municipal and government facilities
- Stadiums and arenas



Technical Documents



Packaging and Coverage

2:1 Ratio

Available in 3, 15 and 150 Gallon Kits

Can be applied at thicknesses ranging from 6 - 20 mils depending on the requirements of the job



**RIO-COAT™ ERS
RAPID SET EPOXY**

RIO-COAT™ ERS SPECIFICATION:

RIO-COAT ERS™ is a fast cure high solids epoxy coating that can be used on multiple surfaces.

- Dry to touch in 3-4 Hours @ 70°F
- Excellent chemical resistance
- Can be applied clear or pigmented
- 2:1 ratio
- Available in 3 & 15 gallon kits

Can be applied at thicknesses ranging from 6 - 20 mils depending on the requirements of the job



CHEMICAL PROCESSING ROOM



**RIO-COAT™ EUV
UV RESISTANT EPOXY**

RIO-COAT™ EUV SPECIFICATION:

RIO-COAT EUV is recommended for warehouses, kitchens, restrooms, and other areas where either a high-build clear product is needed or where a decorative filled is desired and better UV resistance is needed

- Excellent UV protection
- 2:1 Ratio
- Available in 3 & 15 gallon kits

Can be applied at thicknesses ranging from 5 - 20 mils depending on the requirements of the job



HIGH TRAFFIC WAREHOUSE

RIO-COAT™ EPOXY MOISTURE MITIGATION SYSTEMS



RIO-COAT™ EVS MOISTURE MITIGATION EPOXY



BREWERY ADDITION

RIO-COAT™ EVS SPECIFICATION:

RIO-COAT™ EVS is a two-part 100% solid epoxy moisture mitigation system. EVS is a moisture tolerant and VOC-Compliant product that limits alkalinity and the transmission of moisture, odor and other elements through concrete slabs.

- 100% Solids
- 85% & 99% rH options
- 0.06 perm rating
- VOC compliant
- Clear only -do not pigment

Packaging and Coverage

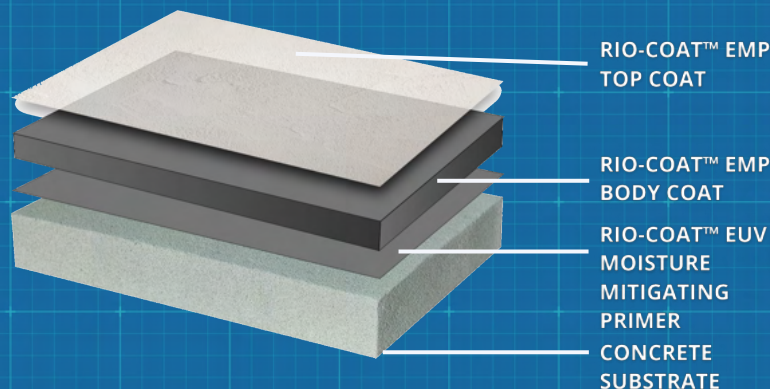
1:1 Ratio

Available in 2, 10, 100 & 500 Gallon Kits

Covers 107ft² at 15mils for 85%rh or 70ft² at 23mils for 99%rh



Technical Documents

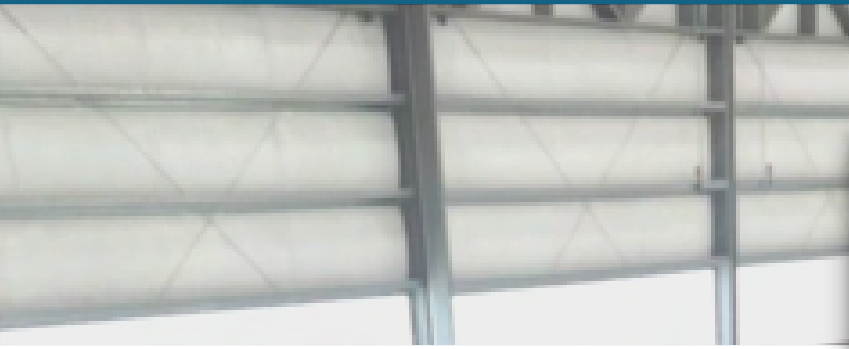


RIO-COAT™ EMP TOP COAT

RIO-COAT™ EMP BODY COAT

RIO-COAT™ EUV MOISTURE MITIGATING PRIMER

CONCRETE SUBSTRATE



RIO-COAT™ ETM/EHB/EPT POWER TROWEL RESURFACERS



RESURFACED AIRCRAFT HANGAR



RIO-COAT™ ETM SPECIFICATION:

RIO-COAT™ ETM is a three-component filled, high-solids epoxy system for resurfacing eroded interior concrete floors. Topcoats (RIO-COAT™ EMP, RIO-COAT EHB AND RIO-COAT EPT) are two-component, high-solids epoxies for sealing the overlay.

Applications include repairing large eroded areas such as main traffic aisles, loading docks, aircraft hangars and other spaces subject to heavy traffic and abuse.

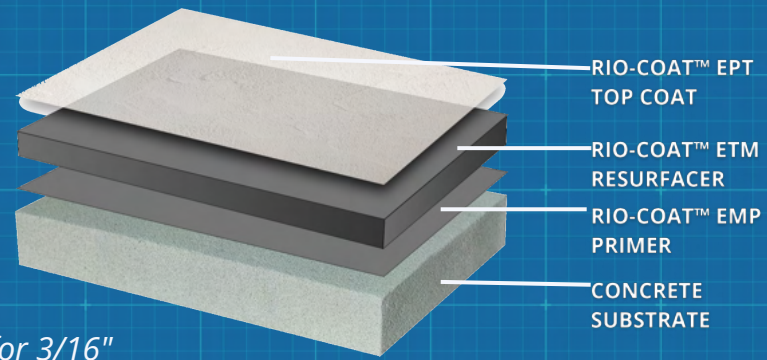
- Safe to use around solvent sensitive products such as food, beverages and pharmaceutical
- Less costly than concrete replacement or capping
- Low VOC (6 g/L). (Complies with SCAQMD VOC regulations. LEED credits available.)

Packaging and Coverage
2:1 Ratio
Available in 15 and 150 Gallon Kits

Covers 42ft² at 40 mils for 1/4" and 45ft² at 36mils for 3/16"



Technical Documents





**RIO-COAT™ EHB
EPOXY GROUT COATING**

RIO-COAT™ EHB SPECIFICATION:

RIOCOAT™ EHB is a high solids epoxy coating that can be used for sealing a highly filled epoxy sand filled re-surfacer. This high-gloss surface is easy to clean and provides excellent protection against wear and abrasions.

- Excellent chemical and impact resistant
- Stipple finish coating for slight non-skid
- Topcoat for sand filled re-surfacer

Packaging and Coverage

2:1 Ratio

Available in 3 and 15 Gallon Kits

Covers 133ft² per gallon at 12mils



HOSPITAL RENOVATION

APPLICATIONS:
Seal Coat for Epoxy Mortar



**RIO-COAT™ EPT
POWER TROWEL TOP COAT**

RIO-COAT™ EPT SPECIFICATION:

RIO-COAT™ EPT Topcoat is a high solids, thickened epoxy for sealing an overlay or if an "orange-peel" texture is desired.

- LEED® v4 – Indoor air quality credits available.
- Meets requirements per CDPH-CA Section 01350
- Environmentally and user friendly
- Complies with SCAQMD VOC regulations--<100 g/L

Packaging and Coverage

2:1 Ratio

Available in 3 and 15 Gallon Kits

Covers 133ft² per gallon at 12mils

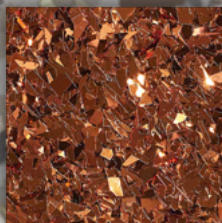
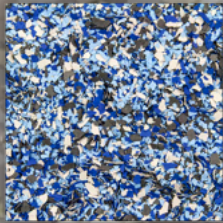
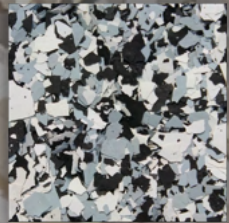


EMERGENCY ROOM FLOOR

APPLICATIONS:
Walls - Seal Coat for Epoxy Mortar - Base Coat to Create Texture

RIO-COAT™ DECORATIVE EPOXY OPTIONS

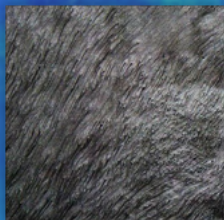
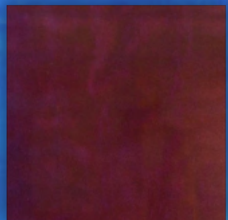
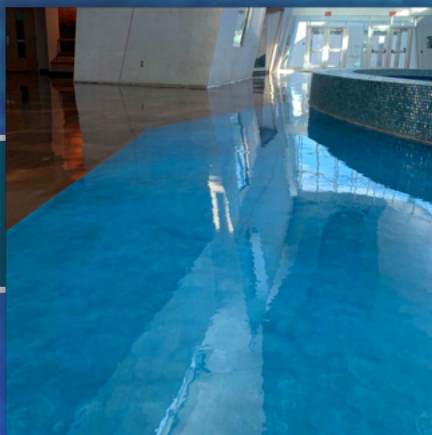
**RIO-COAT™
DECORATIVE FLAKE**



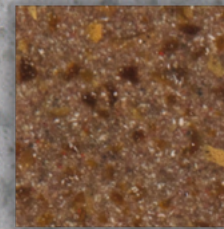
**RIO-COAT™
DECORATIVE QUARTZ**



**RIO-COAT™
DECORATIVE METALLIC**



**RIO-RAZZO™
DECORATIVE SLURRY**





**RIO-COAT™
NOVOLAC EPOXY**

BATTERY CHARGING STATION

RIO-COAT™ ECR NOVOLAC SPECIFICATION:

RIO-COAT™ ECR Novolac is a two-component colored high solids Novolac epoxy coating designed for application where splash and spills of acids, chemicals, and solvents occur.

Applications include battery charging stations, chemical storage rooms, second containment areas and waste treatment plants.

- High-build and top coat options
- Excellent chemical resistance
- Excellent solvent resistance
- Superior resistance to high concentration acids and alkalis

Packaging and Coverage

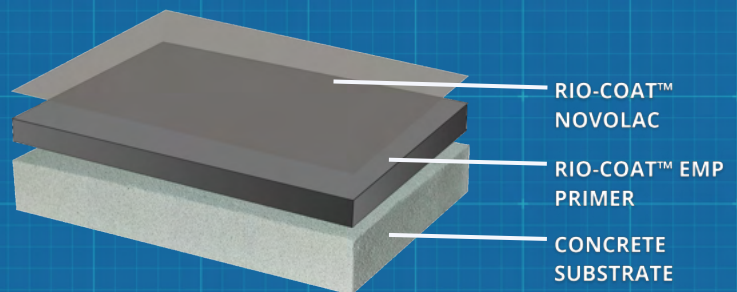
2:1 Ratio

Available in 3 and 15 Gallon Kits

Covers 90-100 square feet per gallon @ 16-18 mils



Technical Documents



**RIO-STAT™
ESD & CONDUCTIVE**



RIO-STAT™ SPECIFICATION:

Provides excellent abrasion resistance, chemical resistance and static dissipative properties. The electroconductive ingredients used will not wear off and retain their conductive properties regardless of temperature, and unlike Ionics, the performance is independent of humidity.

- Dissipates a 5000 volt charge to zero in less than 0.1 Seconds
- Tests Less than 1×10^9 Ohms conforming with ANSI/ESD S20.20 standard when applied Over RIO-COAT™ EMP non-conductive primer or basecoat
- Tests less than 1×10^6 Ohms conforming with ANSI/ESD S20.20 standard when applied over conductive primer
- Body Voltage Generation (BVG) Below 15 volts with conductive footwear, conforming With ANSI/ESD S20.20 standard
- Meets USGBC LEED criteria for low VOC, low odor

Packaging and Coverage

2:1 Ratio

Available in 3 and 15 Gallon Kits

When applied over prepared concrete the material typically goes down at approximately 20-32 mils when spread at 50-80 ft² per gallon



Technical Documents

